

Special Issue

ISSN 2229-3302

Journal Of Basic And Applied Sciences

U.G.C. Sponsored

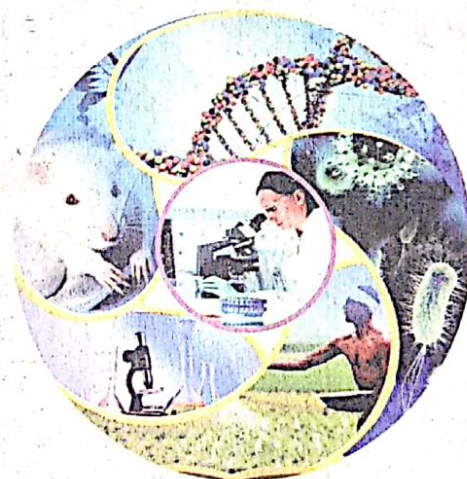
**National Seminar
on
Research Methodology in
physical Science**

**National Symposium
on
New Research Aspects and
It's Applications in life Sciences**

On 15th & 16th February 2014

Vol.10

Feb.2014



M.S.P. Mandal's

Balbhim Arts, Science and Commerce College, Beed

College with Potential for Excellence

NAAC Reaccredited 'A' Grade

Influence of Plant Growth Regulator's on the Seed germination of Sesbania species of Marathwada region of Maharashtra.

Momin Raisoddin

Dept. Of Botany, Milliya Senior College, Beed.

ABSTRACT

Hormones may be defined as biologically active substances which regulate and stimulate plant growth and development. Most of the physiological activities and growth in plants is regulated by the action and interaction of chemical substances in them called hormone. (Rekha Balodi 2013) An experiment was carried out to study the effect of plant growth regulators on seed germination of *Sesbania grandiflora*, *Sesbania bispinosa* and *Sesbania cannabina* of Marathwada region of Maharashtra.

Key Words: Marathwada, Seeds, germination, growth hormone, Sesbania

Material and Methods

The Seed samples were collected from Marathwada region of Maharashtra. The investigation was conducted in the laboratory during 2011-2012. Ten Seeds for each treatment of *Sesbania grandiflora*, *Sesbania bispinosa* and *Sesbania cannabina* were soaked in various plant growth regulators viz. NAA, KI and 2,4-D at 10, 20, & 30PPM for the duration of four days. Untreated seeds served as the control.

Result and Discussion

It can be observed from the data presented in Table-I that all the treatments significantly influenced the germination percentage when compared to the control (water Soaking). Three growth hormones NAA, KI and 2,4-D of different concentration i.e. 10, 20 and 30 ppm were afforded to study their effects on the germination of seeds of *Sesbania grandiflora*. In NAA 30%, 50% and 80% are germinated in 4 days at 10, 20 and 30 ppm seeds. While the percentage of seed germination was % (SGP430, SGP450 and SGP480). While in KI at 10 ppm 6 seeds are germinate 04 days at 20ppm 7 seeds germinated and 30 ppm 10 seeds are germinated respectively. The percentage of seed germination was 50 % at 10 ppm and 70 at 20 and 100% at 30 ppm (SGP4 60, SGP4 70 and SGP4 100). In 2,4-D 2 seeds germinated in 4 days at 10 ppm and Zero seeds germinated at 20 and 30 ppm. The percentage of seed germination was 20 % at 10ppm and zero % at 20 and 30 ppm respectively (SGP420 SGP400)

In KI (30ppm) treated seedling induced in enlargement and increased in Plumule, with increasing the concentration. while in NAA treated seedling reduced in length but increase in size of cotyledons as compared to control. Similar results have been reported by Arumugam et.al.(2006); Dhanker & Sing(1996) In 2,4-D 10, 20 and 30 ppm, the seed germination is retarded. (Table 01, plate 01)

Sesbania bispinosa the dormancy was not break (Table 01, Plate 02)

In *Sesbania cannabina* less germination in all hormone treatment but after 10 days seedling in NAA in 30ppm radical is more thicker than control and other concentration. In KI treatment size of plumule and radical thickness increases in 30ppm concentration as compared to other concentration. (Table 01, Plate 03)

Conclusion

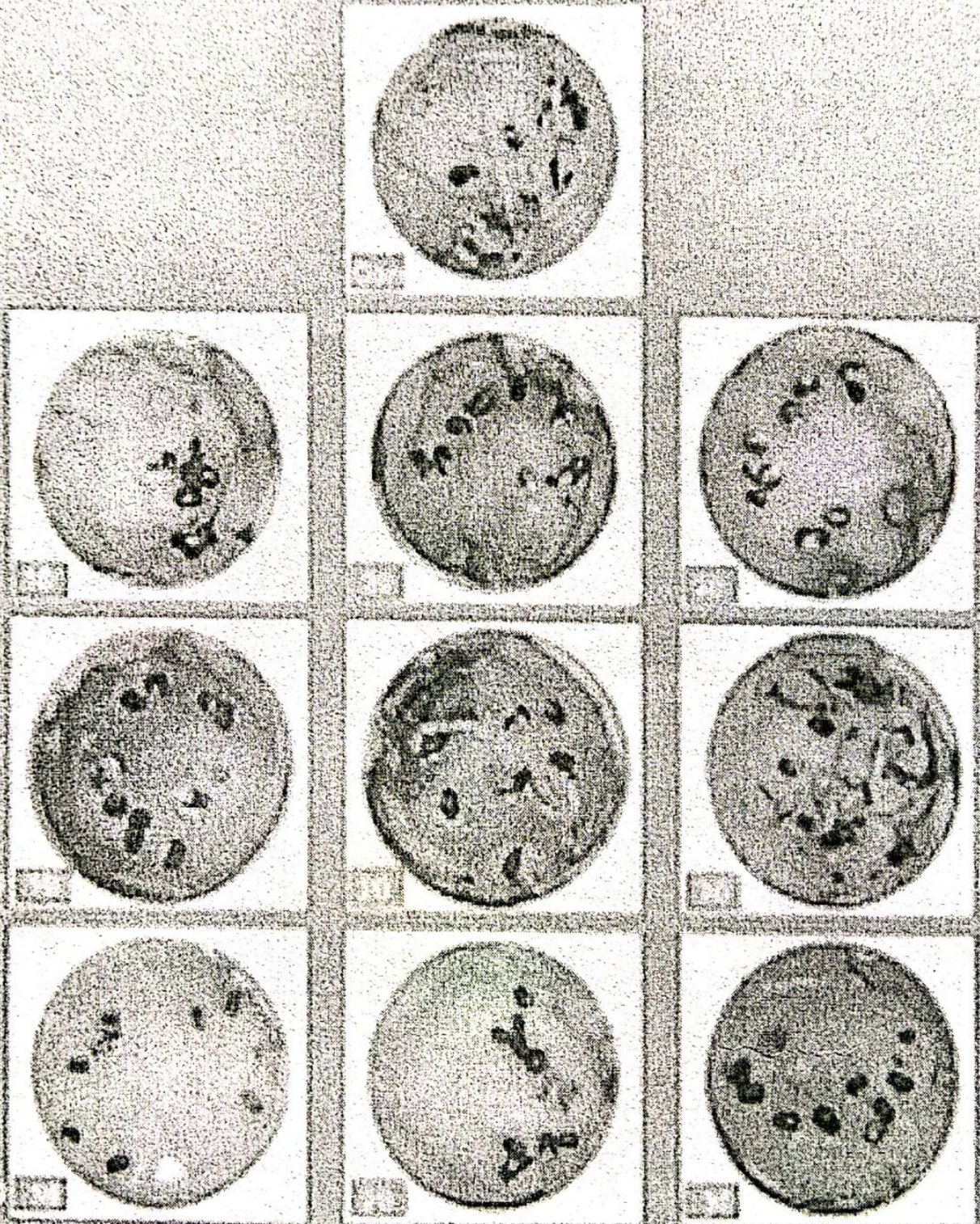
The result indicate that NAA, KI and 2,4-D affect the germination of seeds. Improvement in germination may be obtained with NAA and KI in *Sesbania grandiflora* and *Sesbania cannabina*. The responses of these growth hormone was specific and largely dependent on the nature of seeds.

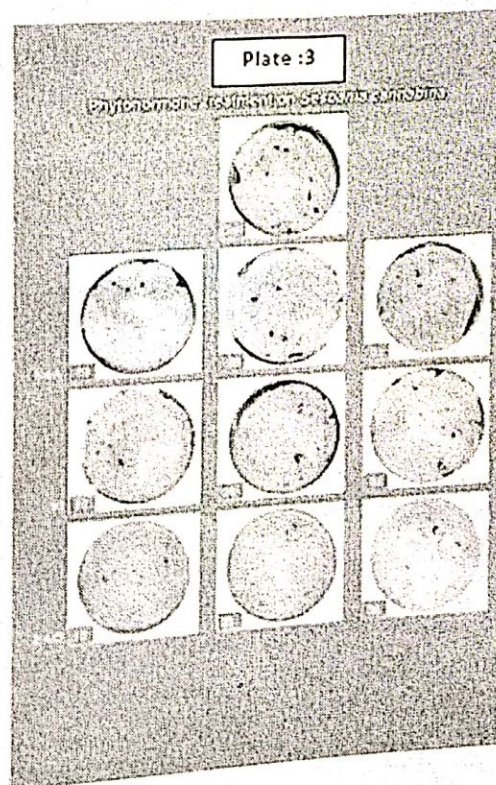
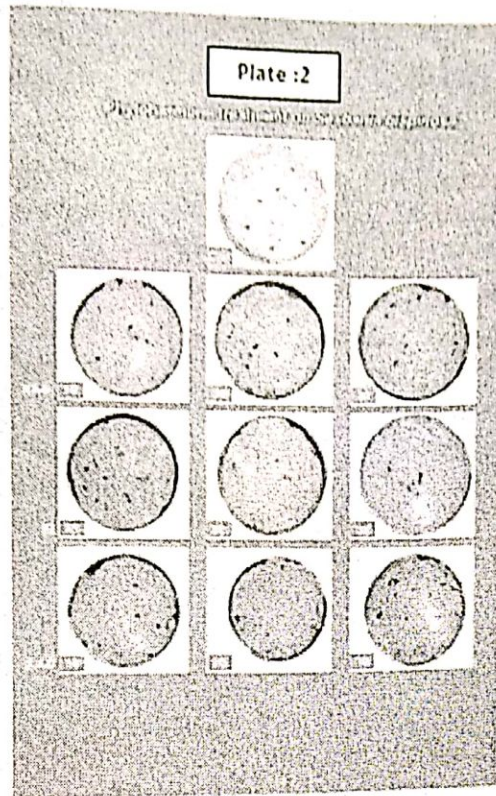
Table.01. Effect of Plant Growth Regulators on Seed Germination

Sr. No.	Growth hormones in ppm	Total seeds	Days for Germination	Total Seeds Germinated			Percentage of Seed Germination %		
				<i>S. grandiflora</i>	<i>S. bispinosa</i>	<i>S. cannabina</i>	<i>S. grandiflora</i>	<i>S. bispinosa</i>	<i>S. cannabina</i>
1	Auxin :- (NAA) 10	10	04	03	02	--	30	20	--
	20	10	04	05	--	01	60	--	10
	30	10	04	08	--	01	80	--	10
2	KI 10	10	04	06	01	01	60	10	10
	20	10	04	07	--	02	70	--	20
	30	10	04	10	--	04	100	--	40
3	2,4-D 10	10	04	02	--	--	20	--	--
	20	10	04	00	--	--	00	--	--
	30	10	04	00	--	--	00	--	--
4	Control with distil Water	10	04	10	01	03	100	10	30

Plate :1

Reproduction of the original of the *Scaphiopus* *scaphiopus*





References

- Arumugam, Shakila and R. Rajeswari (2006). Effect of Ga, certain chemical and media on germination, growth and yield of phyllanthus niruri. Plant Archives, 6(1):121:125.
- Bewley, J., D., Black, M., 1985. Seed Physiology of development and germination, Plenum publishing corporation, New York.
- Dhankhar, D. S. And M. Singh (1996) seed germination and seedling growth of aonla(Phyllanthus emblica Linn.) as influenced by gibberellic acid and thiourea. Crop Res., Hisar, 12(3):363-366.
- Rekha Balodi et.al.(2013) Role of plant Hormones in Plant Disease Management. Agrobios News Letter Vol(12) No.7:62:63.